

Cleveland Clinic Multispecialty Pathology Symposium

January 25-27, 2019 | New Orleans Marriott, New Orleans, LA

Sessions/Topics

Genitourinary Pathology

- An Approach to Prostate Biopsy Diagnosis
- Prostate Cancer Grading: An Update
- Classification of Renal Neoplasms with Clear Cytoplasm
- An Approach to TURBT Evaluation: Diagnosis and Staging

Dermatopathology

- Diagnostic Problems in Melanocytic Tumors
- Inflammatory Dermatopathology 101 for the Surgical Pathologist
- Primer on Cutaneous Adnexal Tumors
- Navigating Spindle Cell Lesions of the Skin

GYN Pathology/Cytology

- Precursors of Endometrial Cancer
- Non-Endometrioid Adenocarcinoma of the Uterus
- FNA of Solid Pancreatic Masses
- Update in Lung Cytology: Dealing with Small Samples

ENT

- A Practical Approach to Salivary Gland Neoplasms Part I
- A Practical Approach to Salivary Gland Neoplasms Part II
- Bread and Butter Sinonasal Tract Pathology
- Unusual Sinonasal Tract Tumors

GI/Hepatobiliary Pathology

- Medical Liver Biopsies for the Surgical Pathologist
- Update on Cystic/Intraductal Lesions of Pancreas and Biliary Tree
- Challenges in IBD Diagnosis
- Potpourri of Common GI Consult Cases: Key Diagnostic Features and Pitfalls



**SAMs credit
will be
available**

Cleveland Clinic Multispecialty Pathology Symposium

January 25-27, 2019
New Orleans Marriott, New Orleans, LA

Description

Plan to attend this symposium that will focus on practical discussions of commonly encountered dilemmas in surgical pathology, dermatopathology, and cytology. The goal is to provide evidence-based guidance on the diagnosis and management of challenging cases in prostate disease, renal neoplasms, GI and medical liver disease, endometrial and uterine masses, gynecological cytology, lung cytology, head and neck pathology, and melanocytic and inflammatory skin lesions. Practicing pathologists, fellows, and residents who attend will maintain, develop, and increase their knowledge, competence, and professional performance with the intent to improve patient care and reduce disease impact.

Target Audience

Pathologists and Pathology Residents and Fellows



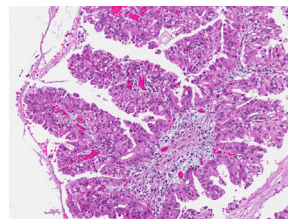
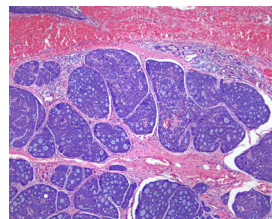
Symposium Co-Directors

Daniela Allende, MD
Jesse McKenney, MD

Faculty

Jennifer Brainard, MD
Jennifer Ko, MD, PhD
Akeesha Shah, MD

This activity has been approved for
AMA PRA Category 1 credit™.



For additional information, visit www.ccfcm.org/19pathology