

Postgraduate Course DIAGNOSTIC GYNECOLOGIC PATHOLOGY



Linz, September 30 – October 2, 2015

Course Director:
Farid Moinfar, MD
Department of Pathology
Hospital of the Sisters of Charity,
Linz, Austria



KRANKENHAUS
BARMHERZIGE
SCHWESTERN

Linz

EIN UNTERNEHMEN DER VINZENZ GRUPPE
Medizin mit Qualität und Seele www.vinzenzgruppe.at

COURSE OBJECTIVES

During the course, the participants will review 60 cases dealing with a variety of benign and malignant gynecologic neoplasms and tumor-like lesions. On each day, 20 cases will be extensively discussed by an interactive approach. Particular attention will be paid to the diagnostic criteria with systematic analysis of differential diagnoses. Value and limitations of immunohistochemistry and molecular-genetic tools will be demonstrated and critically discussed. A comprehensive review and update of histopathology with discussion of clinical significance of benign and malignant tumors will be provided.

PARTICIPANTS

This intensive course is designed for practicing pathologists as well as pathologists in training.

Attendance is limited to 100 registrants.

COURSE DIRECTOR

Farid Moifar, MD

Professor of Pathology, Chairman, Department of Pathology, Reference Center for Breast & Gynecologic Pathology, Hospital of the Sisters of Charity, Linz, Austria
Professor of Pathology, Medical University of Graz, Austria

GUEST FACULTY

Fattaneh A. Tavassoli, MD

Professor of Pathology, Director, Women's Health Program/Gynecologic & Breast Pathology, Department of Pathology, Yale University School of Medicine, New Haven, USA

LOCATION / TIME TABLE / COURSE FEE

The course will be held at the LENTOS Kunstmuseum Linz.
Wednesday, September 30th to Friday, October 2nd, from 8:00 am to 5:30 pm.

LENTOS Kunstmuseum Linz
Ernst-Koref-Promenade 1
4020 Linz, Austria

The course language will be English.

The course fee is € 690,00 and includes a comprehensive handout,
lunch and social programs.

ACCREDITATION

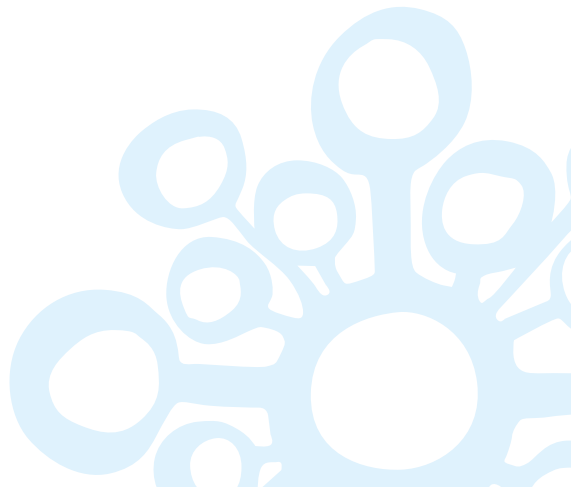
An application has been made to the EACCME for CME accreditation of this event.

REGISTRATION / MORE INFORMATION

We kindly ask for your online registration from 7th May to 15th September 2015:
www.bhslinz.at/gyn-pathology2015

For more information please contact:

Hospital of the Sisters of Charity
Alexandra Etlinger
Seilerstätte 4
A-4010 Linz
E-Mail: alexandra.etlinger@bhs.at





KRANKENHAUS
BARMHERZIGE
SCHWESTERN
Linz



Medical University of Graz



Farid Moinfar, MD
Hospital of the Sisters of Charity,
Linz, Austria
Department of Pathology, Medical
University of Graz, Austria



Fattaneh A. Tavassoli, MD
Yale University School of Medicine,
New Haven, USA

ACCOMMODATION

You may want to make a reservation at the hotel “Arcotel Nike Linz”. You will get a special rate when you provide the key word “Pathology – Sisters of Charity Linz”.

Address: Untere Donaulände 9, A-4020 Linz
Phone: 0043/732/76260 | E-Mail: nike@arcotelhotels.com
Website: http://www.arcotelhotels.com/de/nike_hotel_linz/

Parking

The public indoor car park and the parking deck located directly in front of the hotel offers more than 300 parking spots. All guests of ARCOTEL Nike get a reduced rate of EUR 15.00 for 24 hours.

Picture copyright: TVL-Röbl

Krankenhaus der Barmherzigen Schwestern Linz
Betriebsgesellschaft m.B.H. Seilerstätte 4 A-4010 Linz

TEL +43 732 7677-0 WEB www.bhs-linz.at
FAX +43 732 7677-7200 E-MAIL office.linz@bhs.at