

THE UNIVERSITY OF TEXAS MD ANDERSON CANCER CENTER

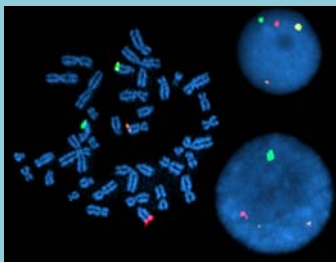
A NEW MULTIDISCIPLINARY SUBSPECIALTY PATHOLOGY RESEARCH FELLOWSHIP OPPORTUNITY

3 positions available in 2012



ABOUT THE PROGRAM

The *Multidisciplinary Subspecialty Pathology Research Fellowship Program* in the Department of Pathology at MD Anderson Cancer Center is designed to train a new generation of physician/scientist pathologists.



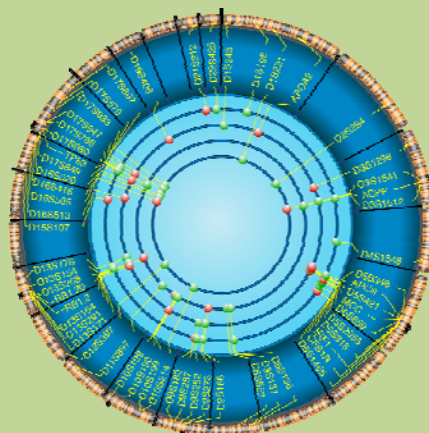
The Fellowship provides comprehensive subspecialty pathology training in conjunction with state-of-the-art subspecialty-based basic and translational research focusing on the integration of research methodology and multidisciplinary approaches to molecular diagnostics.

Physician/scientist pathologist trainees will receive mentor-directed opportunities to experience hypothesis-driven translational research and apply the resulting discoveries to clinical practice.

Graduates of this program will become critical members of multidisciplinary teams of oncologists that will positively impact cancer care in the era of targeted therapies and personalized medicine.

PROGRAM HIGHLIGHTS

- Individualized training plan that includes:
 - One-on-one mentoring in multidisciplinary research laboratories
 - Training in an ACGME- accredited subspecialty pathology program in areas of Breast, Cytopathology, Dermatopathology, Gastrointestinal, Genitourinary, Gynecologic, Head & Neck, Hematopathology, Neuropathology, Sarcoma, and Thoracic
- Multidisciplinary subspecialty approach to cancer treatment
- Structured core courses and electives taken at world renowned UT Graduate School of Biomedical Science (UT GSBS).
- Option to earn Master of Science (MS) degree
- Tutorials, coursework, seminars, and laboratory research experience, including:
 - Intensive grant and manuscript writing workshop
 - Career-building and laboratory management seminars



ELIGIBLE CANDIDATES

The Department of Pathology seeks applications for its Fellowship Program from candidates who meet the following criteria:

- MD, DO, MD/PhD graduates
- Four-years of AP/CP, or 3-years of AP
- ABP board eligible or certified
- Must be US citizen or green card holder

The Fellowship Program begins in **July 2012**. Salary will be commensurate with level of training.



Applicants must submit the following to be considered for an interview:

- Complete application in Discover System (www.mdanderson.org)
- Curriculum vitae
- Personal statement
- Official medical school transcript
- Three letters of reference

The Fellowship Program is competitive, and candidates with the strongest potential will be invited for a personal interview. Selection will be based on several factors:

- Academic achievement
- Strong commitment to career in academic pathology
- Demonstrated excellence during residency
- Evidence of leadership potential
- Interest in subspecialty-based laboratory research
- Excellent interpersonal, oral, and written communication skills

Applications for and questions about the fellowship should be directed to:

Aysegul Sahin, MD
Multidisciplinary Subspecialty Pathology Research Fellowship
Department of Pathology
The University of Texas, MD Anderson Cancer Center
1515 Holcombe Blvd, Unit 085
Houston, TX 77030
Telephone: 713-792-3108 / E-mail: kechin@mdanderson.org