



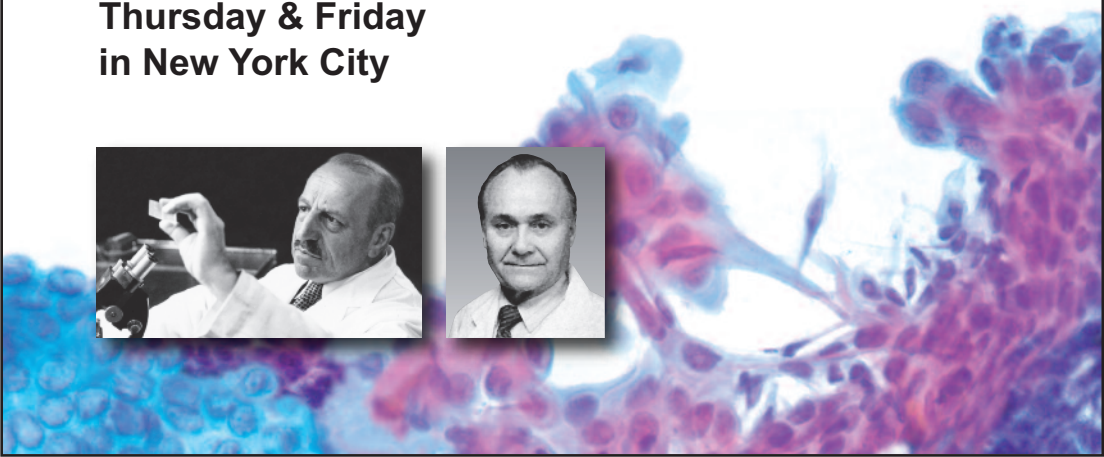
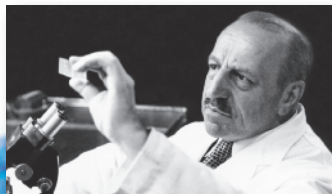
Weill Cornell
Medicine



The Papanicolaou and Frost 2018 Cytopathology Tutorial:

A Weill Cornell and Johns Hopkins Partnership in Excellence

July 26-27
Thursday & Friday
in New York City



The Papanicolaou and Frost 2018 Cytopathology Tutorial: A Weill Cornell and Johns Hopkins Partnership in Excellence

Presented by the Departments of Pathology and Laboratory Medicine,
Weill Cornell Medicine, and The Johns Hopkins University School of Medicine.

Course Description

Drs. George N. Papanicolaou and John K. Frost are undoubtedly the most recognizable names in the world of Cytopathology and are widely considered pioneers and leaders in research and education. They both laid down a strong foundation for cytopathology and established world-renowned laboratories at Weill Cornell and Johns Hopkins, respectively. This 2-day course will be a testament to the continuing of a strong teaching tradition of the two departments. It will be comprised of lectures, and interactive case presentations designed to provide the attendees with an in-depth discussion of the current diagnostic criteria and concepts in clinical Cytopathology.

Location

NewYork-Presbyterian/Weill Cornell Medicine • Weill Auditorium, C Building, 2nd Floor,
Room C-200, 1300 York Avenue (at 68th Street), New York, NY, 10065 USA

FACULTY

Course Directors

Momin T. Siddiqui, MD, FIAC

*Professor of Pathology and Laboratory Medicine
Chief, Papanicolaou Cytology Laboratory
Director, Cytopathology Fellowship Program
Department of Pathology and Laboratory Medicine
Weill Cornell Medicine, New York, NY*

Syed Z. Ali, MD, FRCPath, FIAC

*Professor of Pathology and Radiology
Director, Division of Cytopathology
Department of Pathology
The Johns Hopkins University School of Medicine
& The Johns Hopkins Hospital
Baltimore, MD*

Weill Cornell Faculty

Susan A. Alperstein, MS, CT (ASCP)

*Supervisor, Papanicolaou Cytology Laboratory
Department of Pathology and Laboratory Medicine
Weill Cornell Medicine, New York, NY*

Abha Goyal, MD

*Assistant Professor of Pathology and Laboratory Medicine
Department of Pathology and Laboratory Medicine
Weill Cornell Medicine, New York, NY*

Jonas J. Heymann, MD

*Assistant Professor of Pathology and Laboratory Medicine
Department of Pathology and Laboratory Medicine
Weill Cornell Medicine, New York, NY*

Rema A. Rao, MD

*Assistant Professor of Pathology and Laboratory Medicine
Department of Pathology and Laboratory Medicine
Weill Cornell Medicine, New York, NY*

Grace C.H. Yang, MD, FIAC

*Clinical Professor of Pathology and Laboratory Medicine
Department of Pathology and Laboratory Medicine
Weill Cornell Medicine, New York, NY*

Johns Hopkins Faculty

Peter B. Illei, MD

*Assistant Professor of Pathology
Department of Pathology
The Johns Hopkins University School of Medicine
& The Johns Hopkins Hospital
Baltimore, MD*

Christopher J. VandenBussche, MD, PhD

*Assistant Professor of Pathology
Director, Cytopathology Fellowship Training Program
Department of Pathology
The Johns Hopkins University School of Medicine
& The Johns Hopkins Hospital
Baltimore, MD*

2018 Papanicolaou and Frost Lecturer

Dina R. Mody, MD

*Professor of Pathology and Genomic Medicine
Medical Director of Cytopathology
The Ibrahim Ramzy Chair of Pathology
Department of Pathology and Genomic Medicine
Houston Methodist Hospital
Professor of Pathology and Laboratory Medicine
Weill Cornell Medicine, New York, NY*

To Register

► **To Register/Pay Online:** We accept Visa, MasterCard and American Express. Follow links to the main page of the Tutorial that are located on the Weill Cornell Medicine Pathology and Laboratory Medicine website: www.cornellpathology.com

► **To Register/Pay By Check:** Ms. Jessica Misner • 212-746-6464 • jep2018@med.cornell.edu

SESSION I • Thursday, July 26, 2018

7:00-8:00 am *Registration and Breakfast*

8:00-8:05 am **▶ Opening Remarks**

Introduction of Speakers/Tutorial Outline

Momin T. Siddiqui, MD, FIAC

Syed Z. Ali, MD, FRCPath, FIAC

8:05-9:00 am **▶ LECTURE - THYROID**

Syed Z. Ali, MD, FRCPath, FIAC

9:00-9:30 am **• Challenging Case Discussion 1 - Thyroid**

Syed Z. Ali, MD, FRCPath, FIAC

9:30-9:45 am *Coffee Break*

9:45-10:15 am **• Challenging Case Discussion 2 - Thyroid**

Grace C.H. Yang, MD, FIAC

10:15-11:00 am **▶ LECTURE - SALIVARY GLAND**

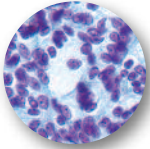
Syed Z. Ali, MD, FRCPath, FIAC

11:00-12:00 pm

“2018 Papanicolaou and Frost Lecture”

Cervical cancer screening: from Dr. Papanicolaou to HPV testing, a paradigm shift. Where are we today and where do we go from here?

Dina R. Mody, MD



12:00-1:00 pm *Lunch Break*

1:00-1:30 pm **• Challenging Case Discussion - Salivary Gland**

Rema A. Rao, MD

1:30-2:15 pm **▶ LECTURE - PANCREAS (Solid Lesions)**

Momin T. Siddiqui, MD, FIAC

2:15-3:00 pm **▶ LECTURE - PANCREAS (Cystic Lesions)**

Momin T. Siddiqui, MD, FIAC

3:00-3:15 pm *Coffee Break*

3:15-3:45 pm **• Challenging Case Discussion - Pancreas**

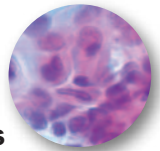
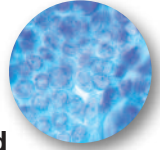
Rema A. Rao, MD

3:45-4:30 pm **▶ LECTURE - KIDNEY/ADRENAL GLAND**

Christopher J. VandenBussche, MD, PhD

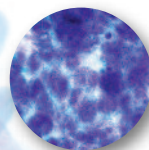
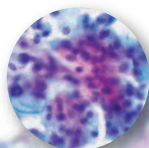
4:30-5:00 pm **Panel Discussion with the Speakers**

5:00 pm *Adjourn*



SESSION II • Friday, July 27, 2018

- 7:00-8:00 am *Registration and Breakfast*
- 8:00-9:00 am ➤ **LECTURE - LUNG**
Peter B. Illei, MD
- 9:00-9:30 am • **Challenging Case Discussion - Lung**
Peter B. Illei, MD
- 9:30-10:30 am ➤ **LECTURE - MOLECULAR AND ANCILLARY TESTING**
Jonas J. Heymann, MD
- 10:30-10:45 am *Coffee Break*
- 10:45-11:15 am • **Challenging Case Discussion - Molecular and Ancillary Testing**
Jonas J. Heymann, MD
- 11:15-12:00 pm ➤ **LECTURE - URINARY TRACT**
Christopher J. VandenBussche, MD, PhD
- 12:00-1:00 pm *Lunch Break*
- 1:00-1:30 pm • **Challenging Case Discussion - Urinary Tract**
Christopher J. VandenBussche, MD, PhD
- 1:30-2:15 pm ➤ **LECTURE - SEROUS CAVITY EFFUSIONS**
Syed Z. Ali, MD, FRCPath, FIAC
- 2:15-3:00 pm ➤ **LECTURE - GYN TRACT (Squamous Lesions)**
Abha Goyal, MD
- 3:00-3:15 pm *Coffee Break*
- 3:15-4:00 pm ➤ **LECTURE - GYN TRACT (Glandular Lesions)**
Abha Goyal, MD
- 4:00-4:30 pm • **Challenging Case Discussion - Gyn Tract**
Susan A. Alperstein, MS, CT (ASCP)
- 4:30-5:00 pm **Panel Discussion with the Speakers**
- 5:00 pm *Course Conclusion*



Statement of Need

Diagnostic cytopathology performs a vital role in the diagnosis and treatment of non-neoplastic and neoplastic lesions. This course is intended to advance and develop the knowledge base of pathologists in cytopathology. Current criteria and concepts based on cytomorphologic evaluation and approaches to differential diagnosis are the core need for the practice of cytopathology. This course is designed to provide a practical update to cytopathologists, cytotechnologists, general pathologists and fellows/residents in training.

Course Goals and Objectives

This CME approved course will lead to improved practice of cytopathology leading to enhanced patient care. At the conclusion of this course the attendees will be able to:

- Evaluate cytologic criteria of various non-neoplastic and neoplastic lesions.
- Be familiar with updated terminology and reporting.
- Identify and avoid possible pitfalls in the daily practice of cytopathology.
- Appreciate the clinical implications of cytologic interpretations.
- Define the value and limitations of fine needle aspirations at various sites.

Target Audience

Cytopathologists, cytotechnologists, general pathologists, fellows and residents.

Tuition

The registration fee is \$600 for Pathologists and \$300 for Cytotechnologists, which includes the Tutorial, course materials, continental breakfast and coffee breaks. The fee does not include travel, housing or other meals.

We accept Visa, MasterCard and American Express. When paying by check, it must be in U.S. currency and drawn on a U.S. Bank, made payable to the WCMC/Pathology Dept. International participants can contact us directly for our wire transfer information. When registering, please be sure to use a complete mailing address. ***The address with which you register will be printed on the master list of registrants.***

Cancellation Policy

In the event of cancellation, the Tutorial fee is refundable less a \$150 service charge. After July 13, 2018, no refunds will be possible and no exceptions of any kind can be honored.

Course Materials

The course materials will be made available prior to the course. You will receive an email notification providing the link required to view and print the handouts. You may also opt to view the materials online during the course using your electronic device. We strongly recommend downloading the lectures prior to the course. Wifi will be provided at no additional charge.

Accreditation and Credit Designation Statements

Weill Cornell Medicine is accredited by the Accreditation Council for Continuing Medical Education to provide continuing medical education for physicians.

Weill Cornell Medicine designates this live activity for a maximum of **15.0 AAMA PRA Category 1 Credit™**. Physicians should claim only the credit commensurate with the extent of their participation in the activity.

Maintenance of Certification

The American Board of Pathology has approved the Tutorial as a Self-Assessment Module (SAM) for Part II of the ABP Maintenance of Certification (MOC) program and designates this educational activity for a maximum of 10.0 SAM Credit(s). Physicians should claim only the credit commensurate with the extent of their participation in the activity.

Disclosure of Relationships/Content Validity

It is the policy of Weill Cornell Medicine to adhere to ACCME Criteria, Policies, and Standards for Commercial Support and content validation in order to ensure fair balance, independence, objectivity, and scientific rigor in all its sponsored activities. All speakers, Course Directors, Co-Course Directors, planners, reviewers, and staff members participating in sponsored activities are expected to disclose relevant financial relationships pertaining to their contribution to the activity. Relationship information is analyzed to determine whether conflicts of interest exist. All conflicts of interest are resolved prior to participation in the planning or implementation of this activity. Presenters and authors are also expected to disclose any discussion of (1) off-label or investigational uses of FDA approved commercial products or devices or (2) products or devices not yet approved in the United States.

Credit for attendance at the regularly scheduled lectures is granted on an hour for hour basis and will be indicated at the bottom of the Tutorial certificate, which will be mailed to you 6 weeks after the program.

Other

A continental-style breakfast will be available from 7 a.m. in the foyer. The use of cell phones or video/audio recording during the lectures is strictly prohibited.

Accommodations/Transportation

For suggested accommodations and transportation information, please see our website at: www.cornellpathology.com

Special Needs

WCM is accessible for individuals with disabilities or special needs. Participants with special needs are requested to contact the Office of CME at: 646-962-6931.

Weill Cornell Medicine
Pathology and Laboratory Medicine
1300 York Avenue, Room C-302
New York, NY 10065

PRSRT STD
U.S. POSTAGE
PAID
SMITHTOWN, NY
PERMIT NO. 15



2-day Cytopathology Tutorial in July • NYC