



**Case Contributed by Dr. Najla Fakhruddin
Posted December 2007**

A 42 years multigravida premenopausal woman with breast cancer and receiving tamoxifen had a uterine mass:



Fig 1: The tumor occupies the endometrial cavity, showing small cysts with mucinous material.

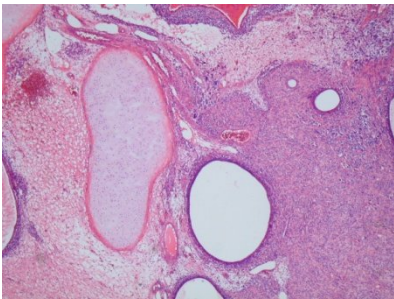


Fig 2: The tumor shows dilated glandular structures, cellular stroma and cartilage

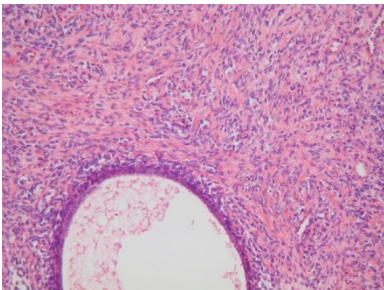


Fig 3: The cellularity is prominent around the glands

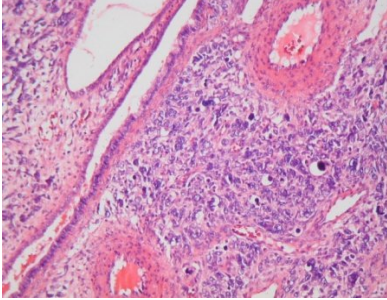
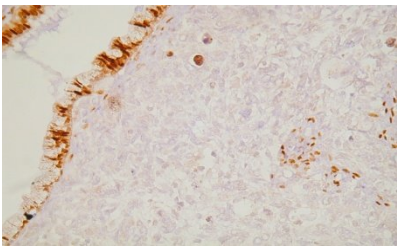
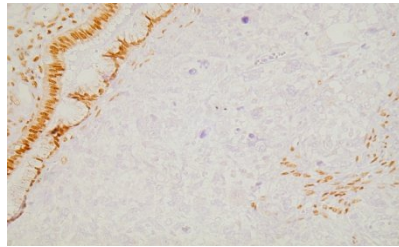


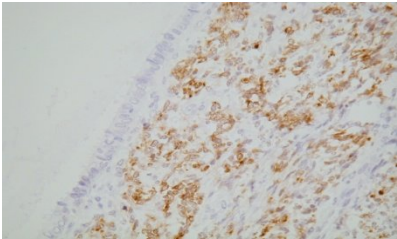
Fig 4: Sarcomatous areas are present with bizarre cells and mitotic activity.



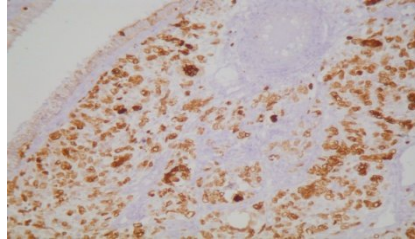
A



B



C



D

Fig 5: Immunohistochemical stains for estrogen and progesterone receptors show focal (30%) positivity (fig A and B). Smooth muscle actin is positive (fig C). Proliferative index (MIB-1) is high (fig D).

Diagnosis: Adenosarcoma