

**Abstract A135: Are survival benefits of new drugs in combinations due to modest benefits in most patients or large benefits in few patients?**

This abstract was presented at a recent conference held by the American Association of Cancer Research, the National Cancer Institute and the European Organisation for Research and Treatment of Cancer. These conferences provide an opportunity for physicians and scientists to present their research.

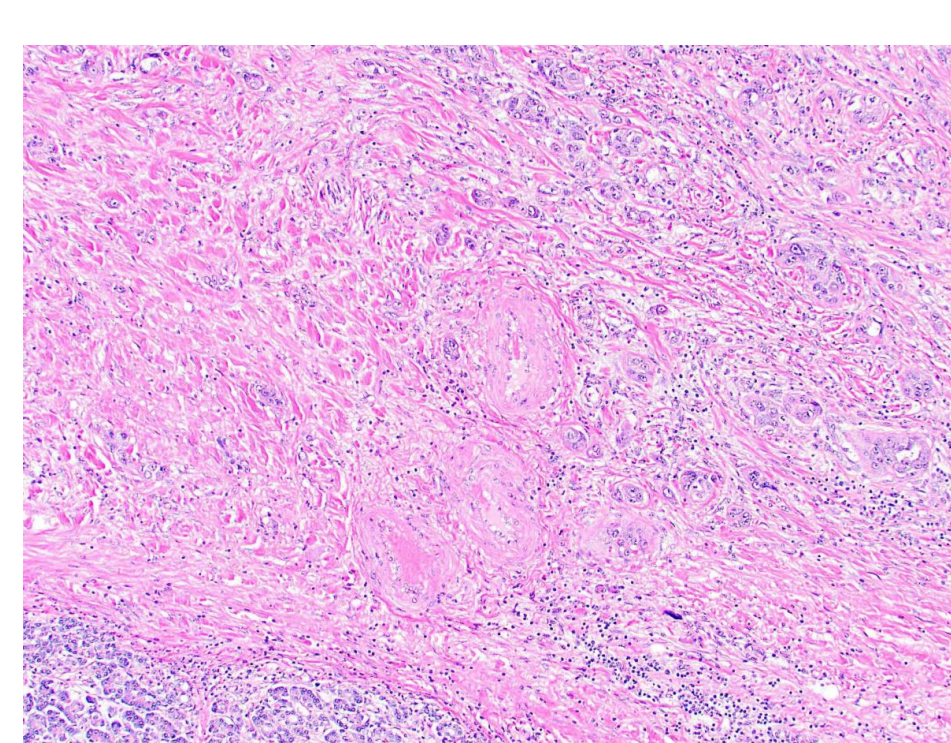
Read more at <https://natpernick.substack.com/p/the-scientific-process-advancing>

**Bile duct cancer**

This is part of our series on cancer from a pathologist's perspective.

Bile duct cancer, also called cholangiocarcinoma, is typically discussed with liver cancer because the bile ducts originate in the liver. However, the cells of bile duct cancer resemble bile ducts and not liver cells, and these cancers behave differently from liver cell cancer (also called hepatocellular carcinoma).

Read more at <https://natpernick.substack.com/p/bile-duct-cancer>

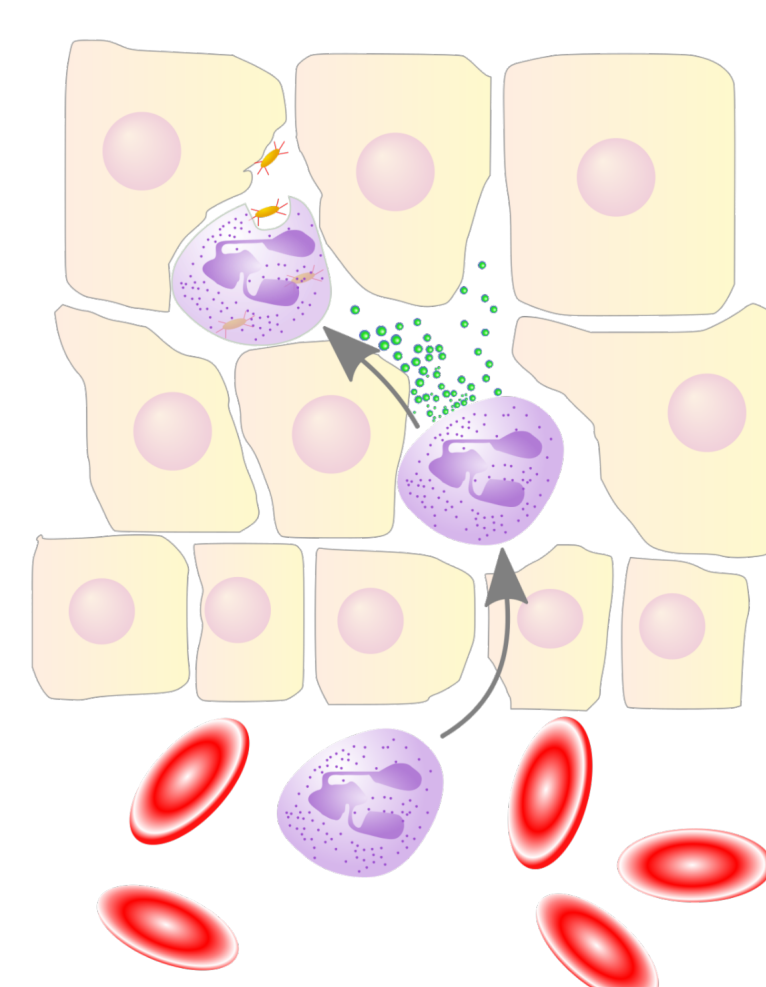


Extrahepatic tumor contains small, dispersed glands and single cells in a haphazard appearance, contributed by Raul S. Gonzalez, M.D.

**Cell migration in children and adults**

It is important to understand physiologic (normal) cell migration because this process is hijacked by metastatic cancer cells.

Read more at <https://natpernick.substack.com/p/cell-migration-in-children-and-adults>



White blood cells (purple cells with granules) migrate from blood vessels into infected tissues to destroy bacteria (oval yellow particles with hairlike projections)

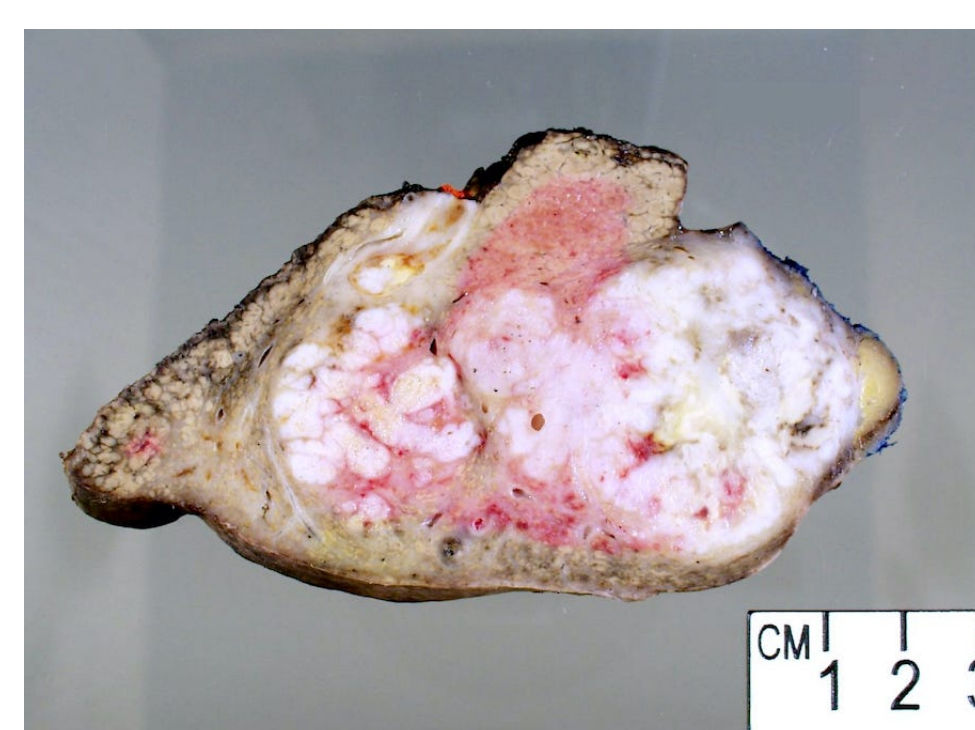
See also [Cell migration in the embryo and fetus](#).

**Liver Cancer**

Liver cancer combined with intrahepatic bile duct cancer is the #6 cause of cancer death in the U.S. (after lung, colon, pancreas, breast and prostate cancer), with 29,380 deaths projected in 2023 (19,000 in men, 10,380 in women).

Liver cancer typically refers to primary liver cancers, i.e. cancers that originate in the liver and resemble liver cells. About 80% of primary liver cancers are liver cell cancer (hepatocellular carcinoma). The rest are usually cancer of the intrahepatic bile ducts (cholangiocarcinoma).

See the rest of the post at <https://natpernick.substack.com/p/liver-cancer>



Liver cell cancer (hepatocellular carcinoma), by Irene Y. Chen, M.D.

**Social media**

Follow us on [LinkedIn](#) and [Twitter](#). Twice a week we post interesting cancer related images of malignancies with diagnoses.

**Newsletters**

Click [here](#) to sign up for this newsletter.

We list our prior newsletters on the Newsletters page as well as below.

See <https://www.pathologyoutlines.com/ccnewsletter.html>

**Latest versions of our documents:**

[Strategic plan](#) (updated 1 June 2023)

[American Code Against Cancer](#) (updated 9 January 2023)

**Archives:**

- [October 2023](#)
- [August 2023](#)
- [May 2023](#)
- [March 2023](#)
- [January 2023](#)
- [December 2022](#)
- [October 2022](#)
- [July 2022](#)
- [June 2022](#)

- [April 2022](#)
- [March 2022](#)
- [December 2021](#)
- [September 2021](#)
- [August 2021](#)
- [July 2021](#)
- [June 2021](#)
- [April 2021](#)